



# IMPLEMENTING THE DOMESTIC VIOLENCE HOUSING FIRST MODEL IN CALIFORNIA

## KEY FINDINGS FROM THE PROCESS EVALUATION OF SEVEN PILOT SITES

In 2016, 8 agencies piloted the DVHF model, an initiative that focuses on helping survivors get into safe and stable housing as quickly as possible, and on providing services to help them move forward with their lives. The three pillars of the DVHF model, designed to promote housing stability, are:



### **SURVIVOR-DRIVEN, TRAUMA-INFORMED MOBILE ADVOCACY**

Advocates focus on addressing the needs identified by survivors rather than on pre-determined needs promoted by agencies. Advocates are mobile and are trained in trauma-informed practice.



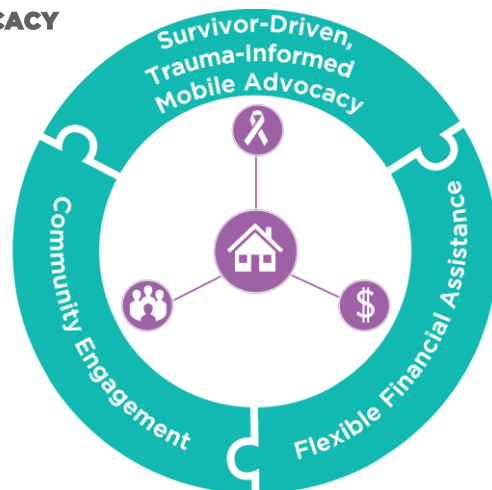
### **FLEXIBLE FUNDING ASSISTANCE**

Many survivors need not only safe and stable housing, but also temporary financial assistance. They may need assistance with issues directly related to housing or funds that are critical to housing stability. Funds are targeted to support survivors so they can rebuild their lives.

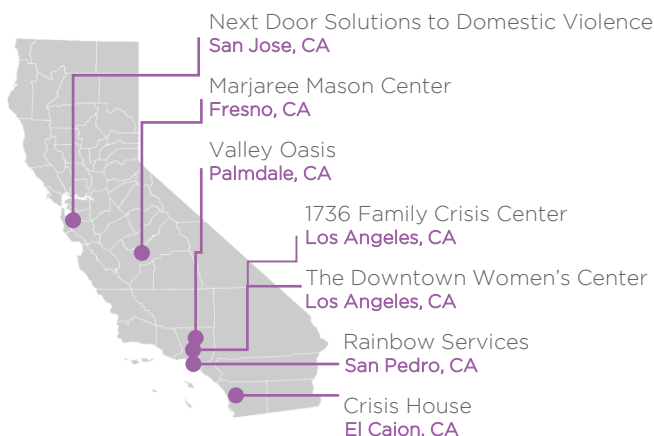


### **COMMUNITY ENGAGEMENT**

Proactive engagement with housing providers, other service providers and community members changes how the community responds to domestic violence.



### **SEVEN AGENCIES PARTICIPATED IN THE PROCESS EVALUATION OF THE DVHF MODEL**



**\$926,838**

total flexible funding distributed



**100%**

of survivors exiting the program had **stable housing**

### **After being in the program,**



of survivors said they **learned more ways to plan for their safety**



of survivors **felt more hopeful about the future**

## LESSONS LEARNED



Allocate funds toward administrative costs related to DVHF



Allow time for start-up activities needed to support the model



Be clear about how flexible funds can and cannot be used



Consider using some funds for clients needing significant support



Create a learning community for agencies incorporating DVHF into their work

For more information about Michigan State University's Research Consortium on Gender-Based Violence and their work with the DVHF Model, please visit [www.vaw.msu.edu](http://www.vaw.msu.edu)

For more information about DVHF, please visit: <https://wscadv.org/projects/domestic-violence-housing-first/>